



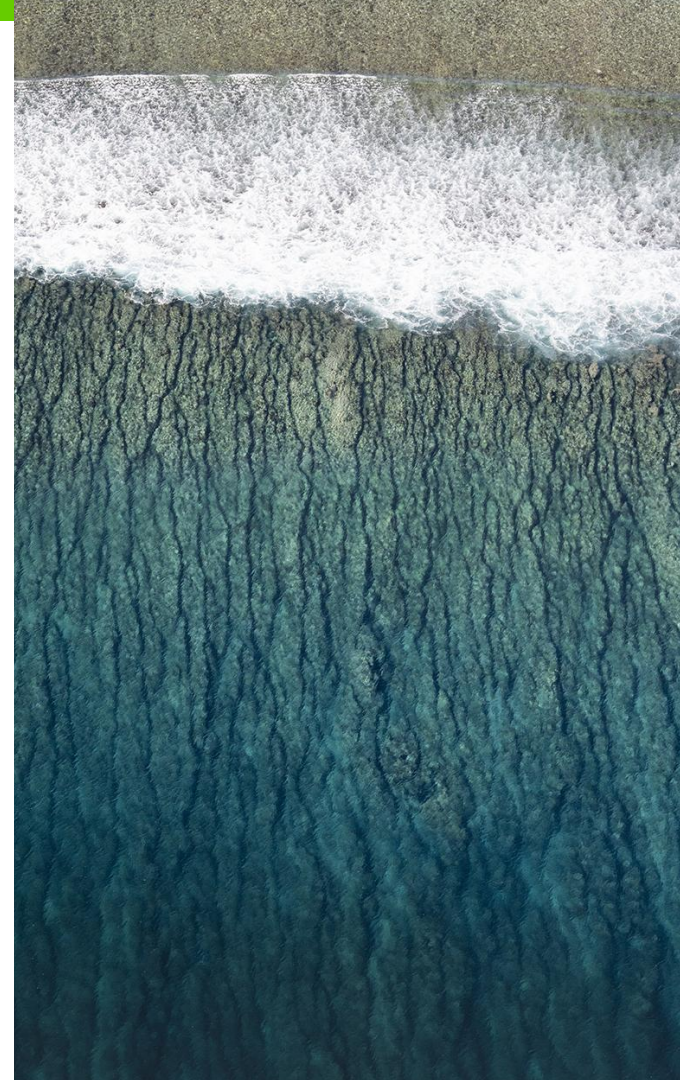
Ist es ein Match?

Equity, Diversity & Inclusion bei der Jobsuche

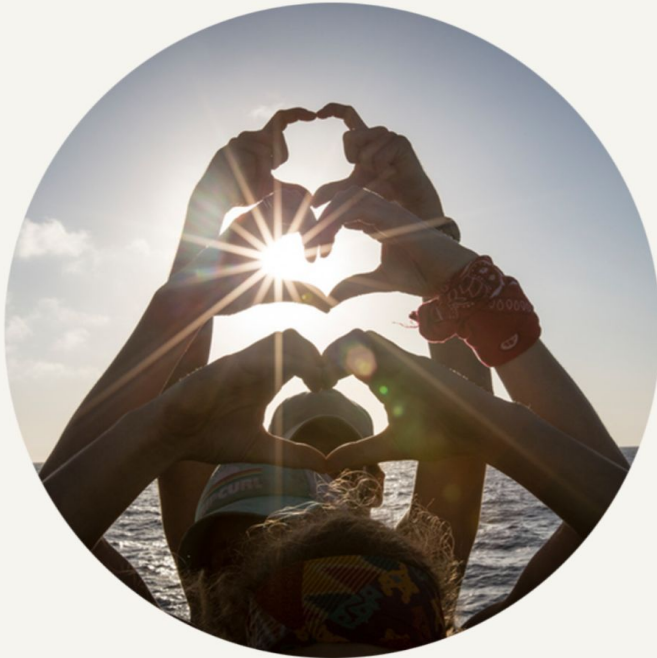
22.02.2024, Netzwerktreffen Nachhaltigkeit: Arbeitgebende der Zukunft

3 Sichtbare Key Driver von Justice, Equity, Diversity, Inclusion und Safety (what we call JEDIS)

1. Vision & Strategie
2. Employee Resource Groups /
Communities
3. Recruiting



1. Vision & Strategie



We envision a Greenpeace where building people power is embedded into campaigns, relationships, organisational policies, and nonviolent actions; where we embody:

Justice

In how we are accountable to one another and hold power to account

Diversity

In how we embrace and sustain our complexity and differences

Safety

In how we build environments where we are safe to be brave and create futures we deserve

Equity

In how we address systemic inequities when we envision our shared future

Inclusion

In how we invite and amplify all voices in our movement



2. Employee Resource Groups / Communities



Global
Majority
Network

Neuro-
divergence
Community

Youth
Group



3. Recruiting



Greenpeace International is an equal opportunity employer with a longstanding commitment of providing a work environment that respects the dignity and worth of each individual. We recognise and value the benefits and strengths that diversity brings to our employees and the whole organisation and we thrive in an environment that encourages respect and trust. We do not discriminate in employment opportunities or practices on the basis of age, ancestry, citizenship, colour, disability, ethnicity, family or marital status, gender identity or expression, national origin, political affiliation, race, religion, sex, sexual orientation, veteran status, or any other legally protected characteristic and would like to invite you especially to apply.



GREENPEACE

Careers bei [Greenpeace International](#)

LinkedIn



Sophie Läßle (she/her)
Greenpeace International
JEDIS Officer

Connect with me on [LinkedIn](#)

**JUSTICE
EQUITY
DIVERSITY
INCLUSION
SAFETY**